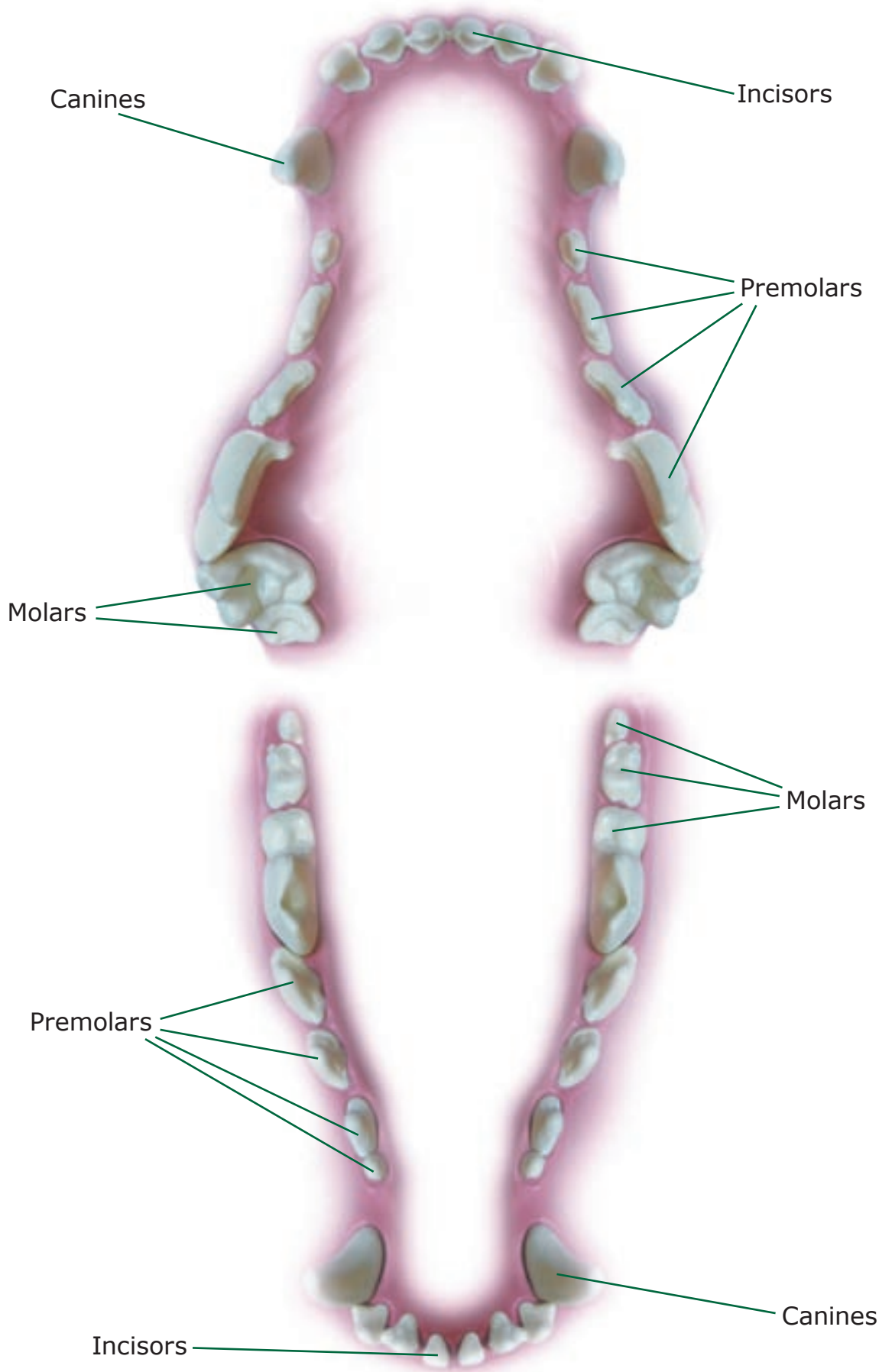


Make Your Dog's Oral Health a Priority



Stages of Periodontal Disease

More than 80% of dogs show signs of gum disease by age three*
 Periodontal disease has been linked to heart, kidney and liver problems in dogs**



Stage 1: *Gingivitis*



Stage 2: *Early periodontal disease*



Stage 3: *Moderate periodontal disease*



Stage 4: *Advanced periodontal disease*

Types of Fractures

Dogs commonly fracture teeth chewing on cage doors, chain-link fences and hard toys



Enamel infraction



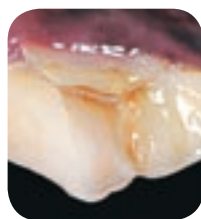
Enamel fracture



Uncomplicated crown fracture



Complicated crown fracture



Uncomplicated crown-root fracture



Complicated crown-root fracture



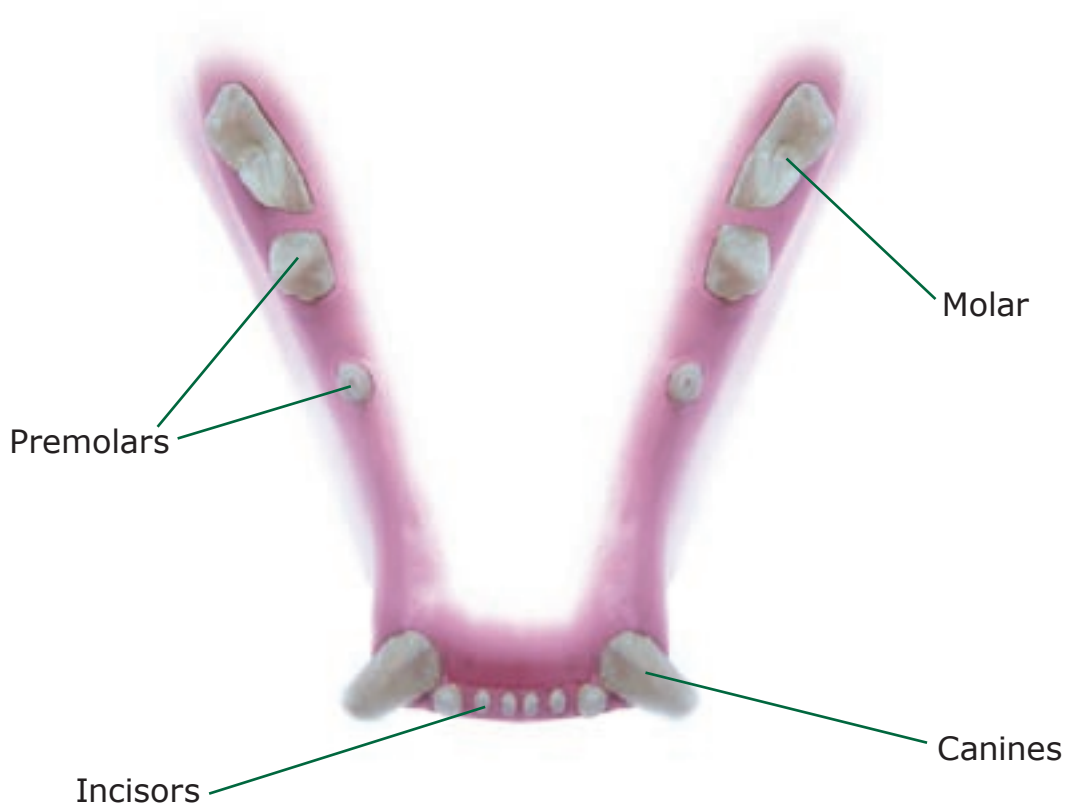
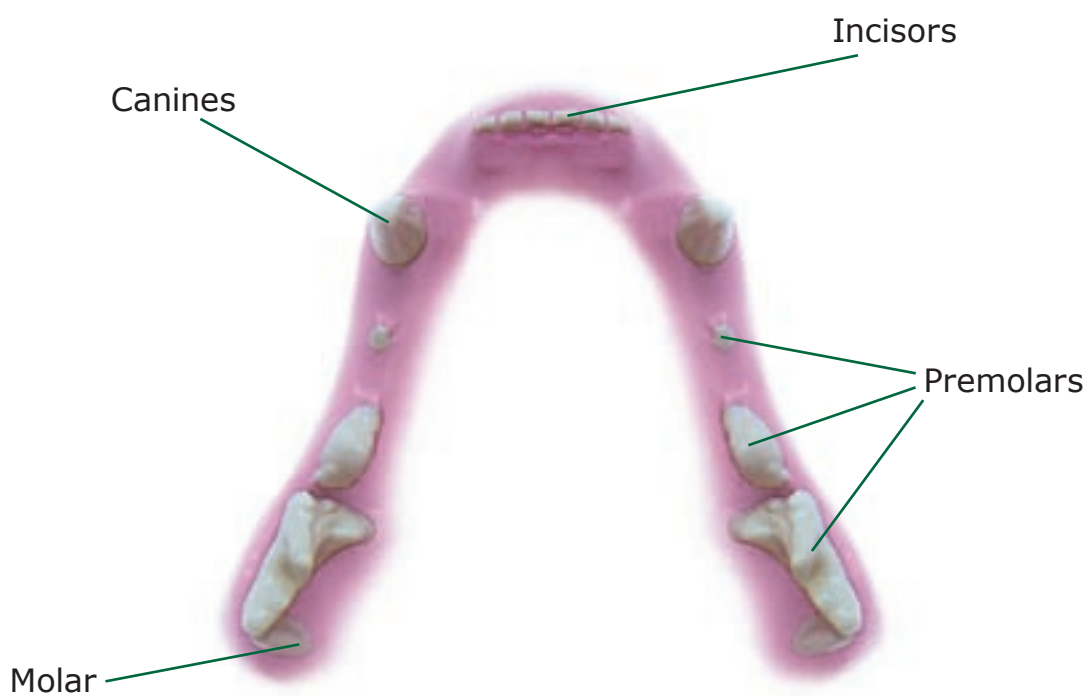
Root fracture

*American Veterinary Medical Association website. www.avma.org.
 **DeBowes, LJ, et. al. Association of periodontal disease and histologic lesions in multiple organs from 45 dogs. Department of Clinical Sciences, Kansas State University. *Journal of Veterinary Dentistry*. 1996 Jun;13(2):57-60.
 Dental images provided by Jan Bellows, DVM, Diplomate American Veterinary Dental College.
 © 2007 S&M NuTec, LLC. All rights reserved. Greenies, The Original Smart-Treat and the Greenies Dog Logo are registered trademarks of S&M NuTec, LLC.

Learn more at
greenies.com
 or call us at
 1-866-GREENIES.



Make Your Cat's Oral Health a Priority



Stages of Periodontal Disease

70% of cats show signs of oral disease by age three*



Stage 1: *Gingivitis*



Stage 2: *Early periodontal disease*



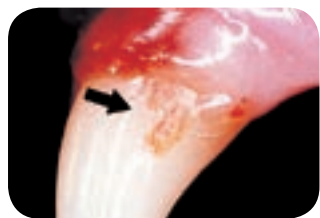
Stage 3: *Moderate periodontal disease*



Stage 4: *Advanced periodontal disease*

Stages of Tooth Resorption

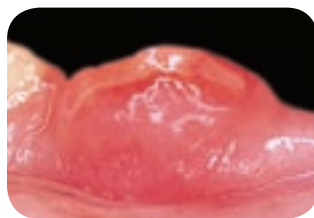
Tooth resorption (TR) is the most common cause of tooth loss in cats**
 These lesions frequently begin below the gum line, so owners don't know there's a problem until teeth are seriously damaged



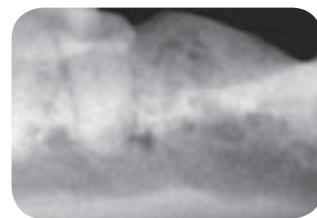
Stage 2



Stage 3



Stage 4



Stage 5

*American Veterinary Medical Association website. www.avma.org.
 **Nash, Holly DVM. Dental Resorption Lesions. www.peteducation.com.
 Dental images provided by Jan Bellows, DVM, Diplomate American Veterinary Dental College.
 © 2007 S&M NuTec, LLC. All rights reserved. Greenies, The Original Smart-Treat and the Greenies Dog Logo are registered trademarks of S&M NuTec, LLC. #20443 rev. 1/07

Learn more at
greenies.com
 or call us at
 1-866-GREENIES.

